

MEMPHIS

Things You Need to Know

Presented by:

Larry Jensen

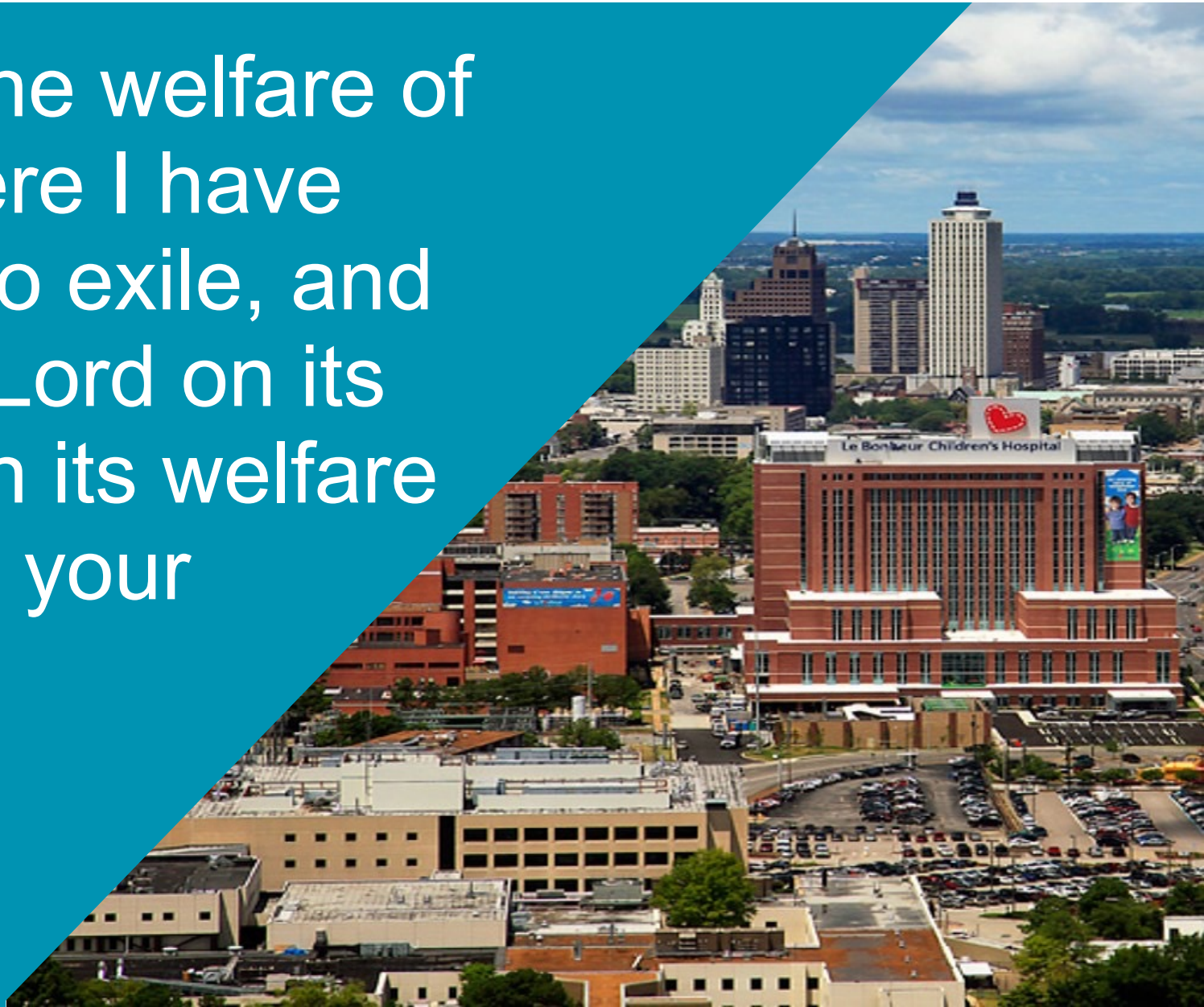
James Armfield

Mission Memphis 2016



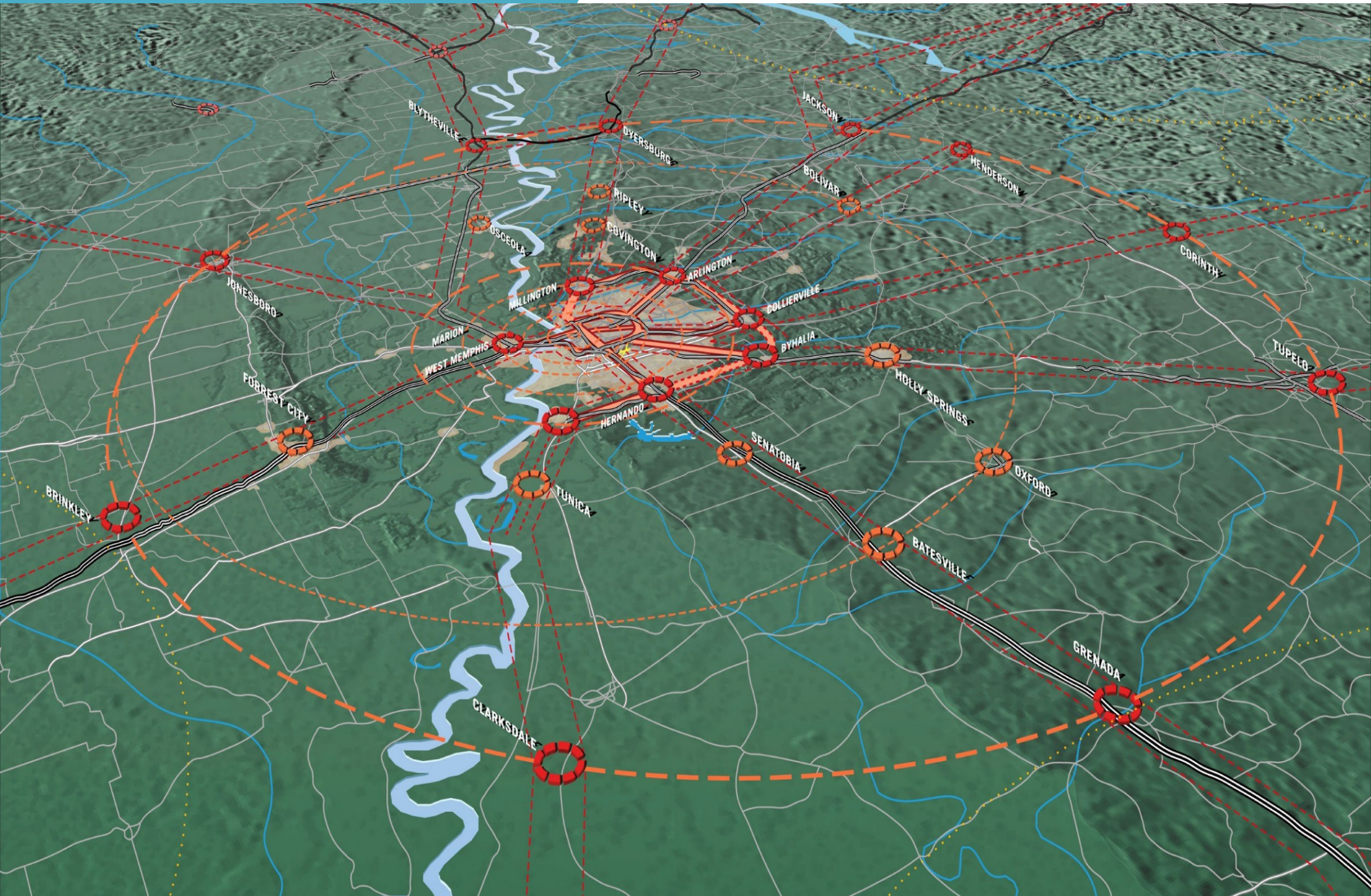
“But Seek the welfare of the city where I have sent you into exile, and pray to the Lord on its behalf, for in its welfare you will find your welfare.”

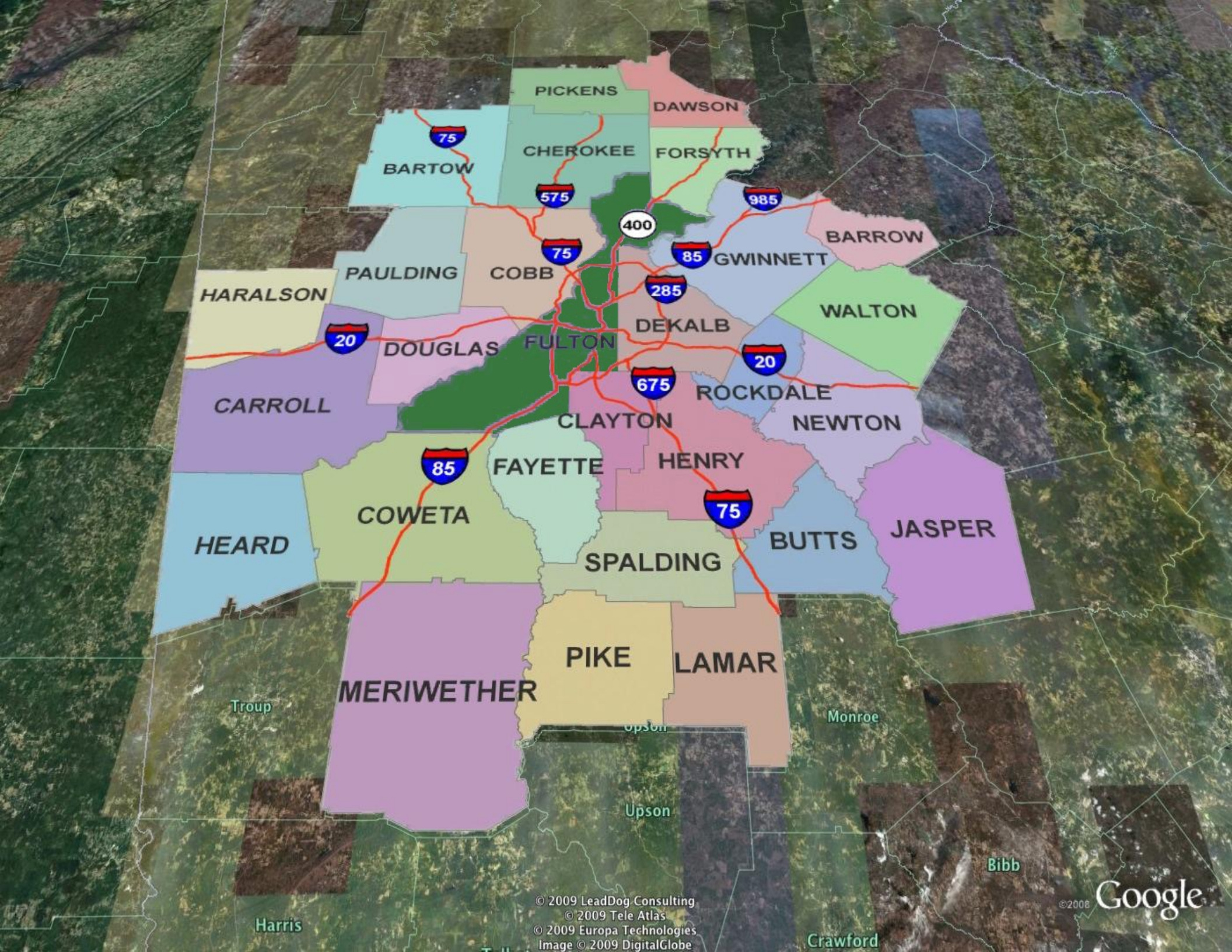
Jeremiah 29:7 ESV



MEMPHIS REGION: ECONOMIC MARKET

MISSION MEMPHIS 2016





© 2009 LeadDog Consulting

© 2009 Tele Atlas

© 2009 Europa Technologies

Image © 2009 DigitalGlobe

© 2008

Google

MEMPHIS HISTORY

MISSION MEMPHIS 2016



1590

1796-1811

1878

1912

1916



1952-1955

1968

1973-1978

1991

2000

1. CRIME & COMMUNITY



1. Crime Stats

Shelby County Statistics

Inmates impacted by Mental Illness	70%
Inmates with Learning Disability	70%
Juvenile Court Cost (per year/per child)	\$100,000
JIFF Cost (per year/per child)	\$3,000
Inmate Cost (per day/pre trial)	\$100
Memphis City Schools Graduation Rate	75%
Inmate Literacy Rate (State of CT uses to project need for prison beds)	4 th Grade

95% *of the inmates in Shelby County jail do not have a high school education.*

87% *of violent crimes occur between two people who know one another.*

Shelby County Jail Population by Race

87%

African
American

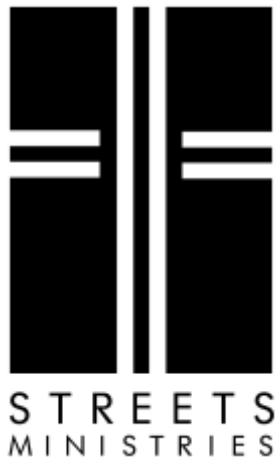
12%

White

1%

Hispanic

1. Community Ministries



1. Active & Engaged

Mission Memphis



NEWS AND ANALYSIS
OCTOBER 05, 2014

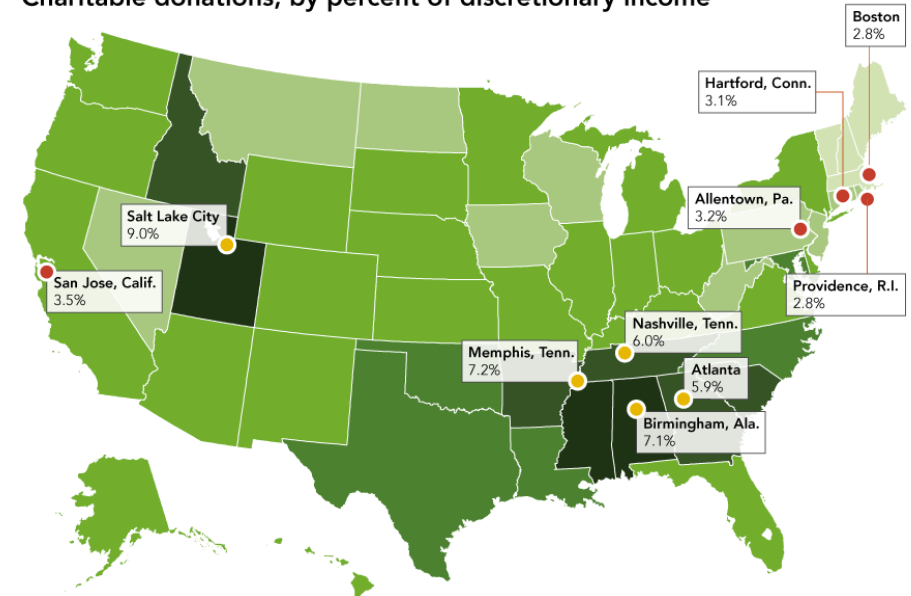
How Much People Give in the Largest Cities

This article was updated on January 13, 2015. See our [editor's note](#).

Only two of the 50 biggest metropolitan areas—Salt Lake City and Memphis—gave more than 5 percent of income to charity. The two least-generous were Hartford, Conn., and Providence, R.I., which each gave less than 2 percent of income.

Rank	Metro area	Giving rate, 2012	Change in giving since 2006
1	Salt Lake City	5.4%	+2.7%
2	Memphis	5.1%	+6.7%
3	Birmingham, Ala.	4.8%	+1.7%
4	Atlanta	4.0%	+6.5%
5	Nashville	3.9%	+4.8%
6	Jacksonville, Fla.	3.8%	+8.7%
7	Oklahoma City	3.7%	-1.6%
8	Dallas-Fort Worth	3.6%	+4.6%

Charitable donations, by percent of discretionary income



2. EDUCATION



2. Education



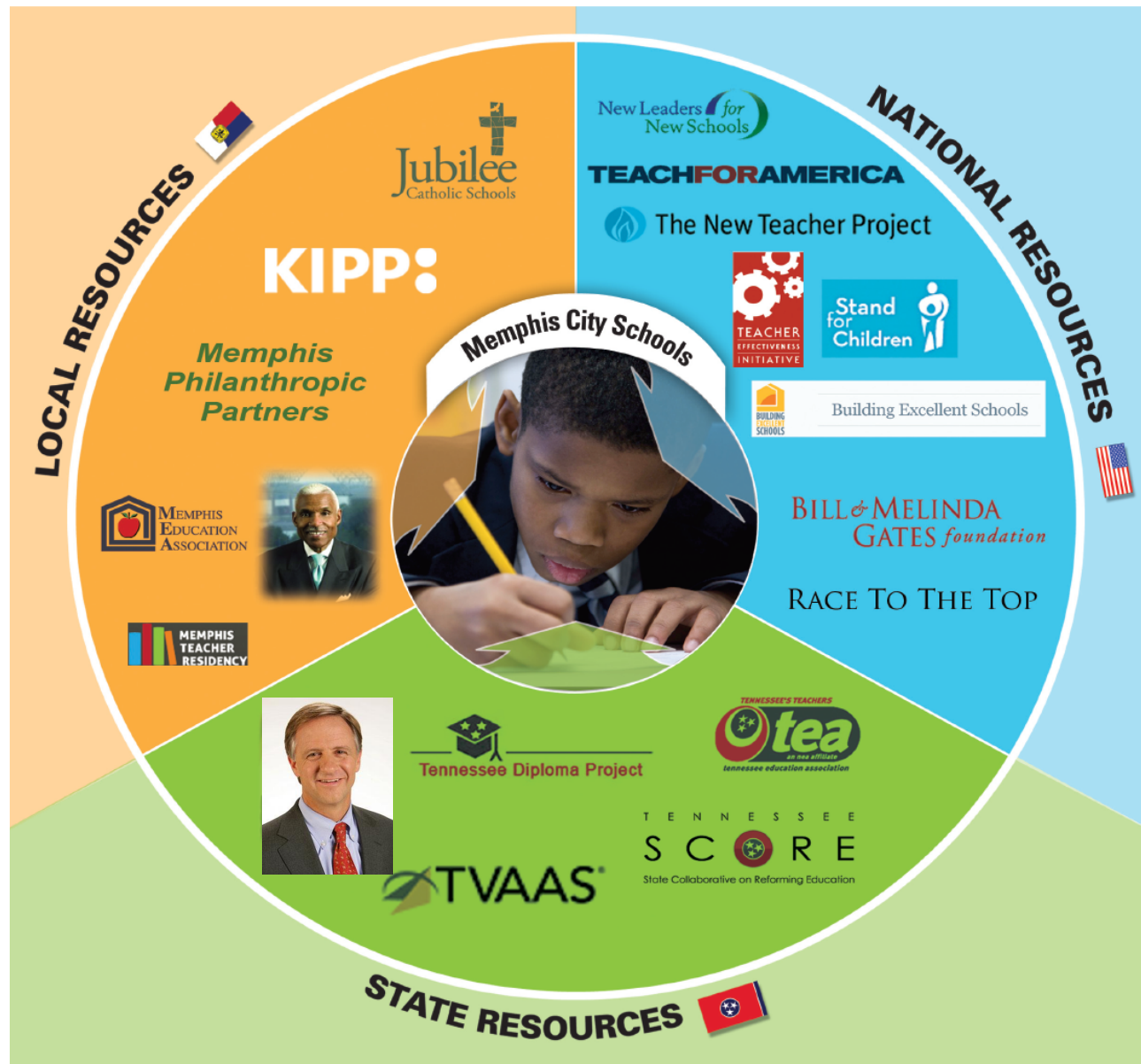
Memphis: Epicenter for Education Reform



PeopleFirst Partnership is an unprecedented collaboration of business, government, academic and civic leaders dedicated to strengthening Memphis and Shelby County's cradle-to-career pipeline.

Source: peoplefirstpartnership.org

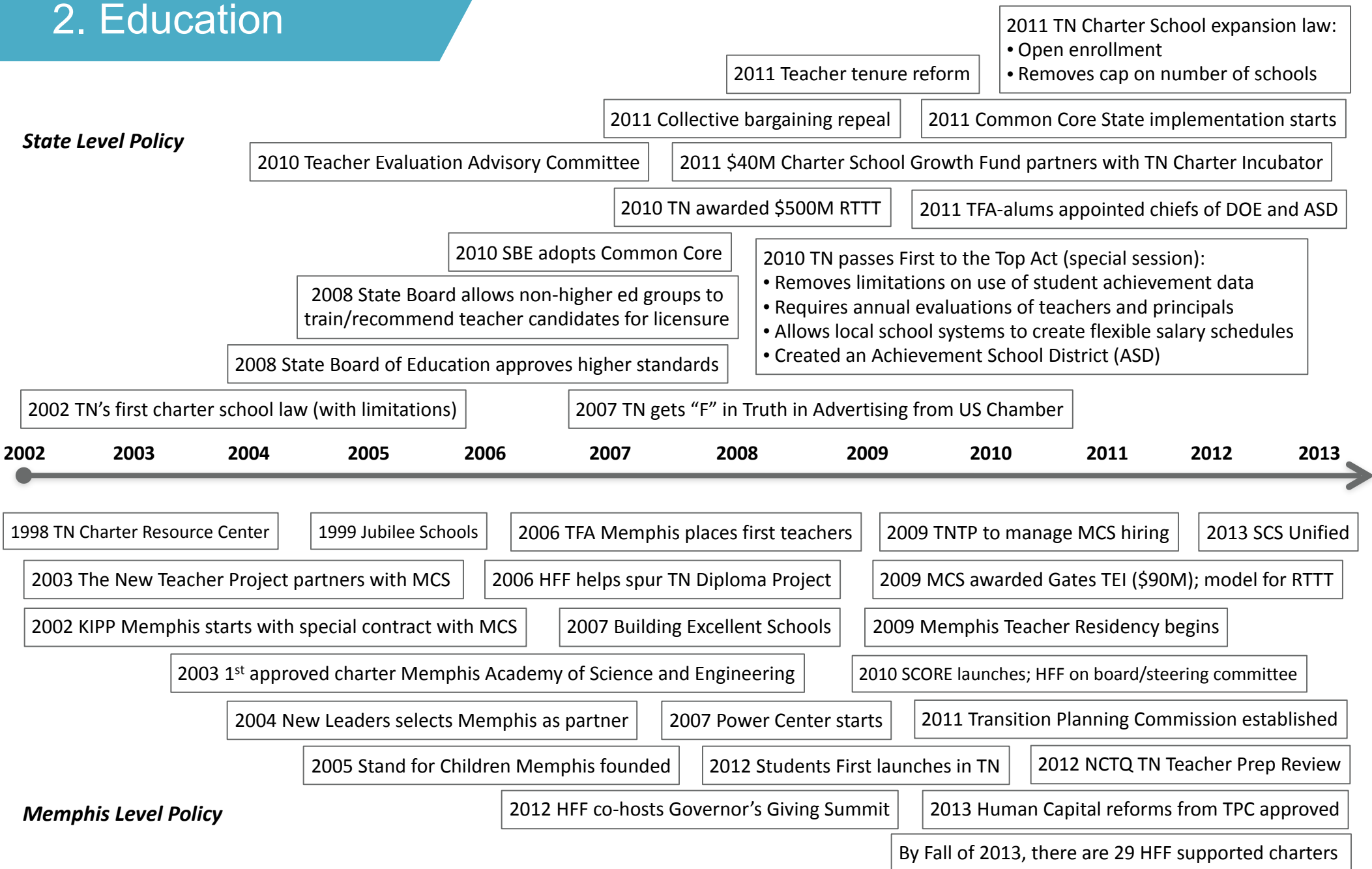
2. Education



Hyde Family Foundations: Milestones in Education

Education Mission & Belief System: Close the achievement gap. ALL students deserve access to a high-quality education. It's a basic civil right.

2. Education



3. DIVERSE COMMUNITY



3. Minorities

The New York Times

August 14, 2008

In a Generation, Minorities May Be the U.S. Majority

By [SAM ROBERTS](#)

Ethnic and racial minorities will comprise a majority of the nation's population in a little more than a generation, according to new [Census Bureau](#) projections, a transformation that is occurring faster than anticipated just a few years ago.

SOURCE: New York Times, August 14, 2008

3. Diversity

“The census calculates that by 2042, Americans who identify themselves as Hispanic, black, Asian, American Indian, Native Hawaiian and Pacific Islander will together outnumber non-Hispanic whites.”



SOURCE: New York Times, August 14, 2008

4. EMERGING LEADERSHIP



4. Emerging Leadership



Bringing Memphis Together



CHAIRMAN'S CIRCLE

Making Memphis Great.



Bringing Leadership Together



NEW MEMPHIS

INSTITUTE



Bringing Memphians Together



Bringing Law Enforcement Together

Who do you have relationships with?

5. ECONOMIC & NEW DEVELOPMENT



5. Economic Development



Memphis: America's Aerotropolis
Where Runway, Road, Rail & River Merge



5. New Development



MAP LEGEND

- Community
- Education
- Hotel
- Industrial
- Medical
- Mixed Use
- Multifamily
- Office
- Retail

183 Projects

\$7.4 Billion

5. New Development

SUMMARY BY STATUS				
	Number of Projects	% of Total Projects	Estimated Cost	% of Total Cost
Proposed	25	13.6	\$1,798,000,000.00	24.2
Under Construction	62	33.7	\$2,856,567,000.00	38.4
Complete	97	52.7	\$2,776,426,765.00	37.4
TOTAL:	184	100.0	\$7,430,993,765.00	100.0

SUMMARY BY TYPE				
	Number of Projects	% of Total Projects	Estimated Cost	% of Total Cost
Community	21	11.4	\$746,600,000.00	10.0
Education	21	11.4	\$749,935,000.00	10.1
Hotel	9	4.9	\$208,925,000.00	2.8
Industrial	35	19.0	\$1,606,926,465.00	21.6
Medical	13	7.1	\$1,724,600,000.00	23.2
Mixed Use	8	4.3	\$948,000,000.00	12.8
Multifamily	20	10.9	\$596,150,000.00	8.0
Office	14	7.6	\$208,120,000.00	2.8
Retail	43	23.4	\$641,737,400.00	8.6
TOTAL:	184	100.0	\$7,430,993,865.00	100.0

Drew Holcomb's Memphis

PRAYERS



City & Church



Q & A